

700mA HIGH VOLTAGE ADJUSTABLE CURRENT REGULATOR WITH ENABLE CONTROL

DESCRIPTION

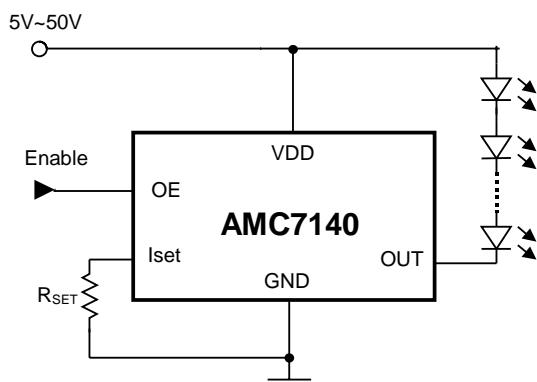
The AMC7140 is a high voltage, low drop-out current regulator for maximum output current up to 700mA. The output current was decided by external resistor. The output sink current could be disabled via OE pin

Build-in thermal protection to prevent the chip over heat damage.

FEATURES

- 0.5V Output Drop-out Voltage at 700mA.
- 700mA Maximum Output Current.
- Output Current Controlled by External Resistor.
- 3us Fast Response Output Stage Enable Control.
- Output Driving Voltage Up To 60V.
- Supply Voltage Range 5V~50V
- TO-252-5L package

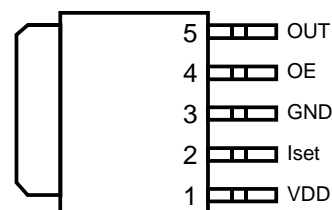
TYPICAL APPLICATION CIRCUIT



APPLICATIONS

- High Power LED Driver
- RGB Full Color Power LED driver
- LCD Monitor/TV LED backlight Driver
- LED Table Lamp

PACKAGE PIN OUT



TO-252-5L
(Top View)

ORDER INFORMATION

| | |
|---|--------|
| DL | TO-252 |
| | 5 pin |
| AMC7140DLFT (Lead Free) | |
| Note: All surface-mount packages are available in Tape & Reel. Append the letter "T" to part number (i.e. AMC7140DLFT). The letter "F" is marked for Lead Free process. | |

ABSOLUTE MAXIMUM RATINGS (Note)

| | |
|--|----------------|
| Input Voltage, V_{DD} | 50V |
| Output Voltage, V_{OUT} | 60V |
| Maximum Operating Junction Temperature, T_J | 150°C |
| Storage Temperature Range | -65°C to 150°C |
| Lead Temperature (soldering, 10 seconds) | 260°C |
| Note: Exceeding these ratings could cause damage to the device. All voltages are with respect to Ground. Currents are positive into, negative out of the specified terminal. | |

PIN DESCRIPTION

| Pin Name | Pin Function |
|-----------|--|
| OUT | Output pin. Sink current is decided by the current on R_{SET} connected to I_{SET} . $I_{OUT} = 500 \times I_{SET}$. |
| OE | Output stage enable control pin. High enable the OUT pin. |
| I_{SET} | Output current set input. Connect a resistor from I_{SET} to GND to set the LED bias current. $I_{SET} = 1.23V/R_{SET}$. |
| VDD | Power supply. |
| GND | Ground |

THERMAL DATA

| | |
|---|----------|
| Thermal Resistance from Junction to Ambient, θ_{JA} | 80 °C /W |
| Junction Temperature Calculation: $T_J = T_A + (P_D \times \theta_{JA})$. The θ_{JA} numbers are guidelines for the thermal performance of the device/pc-board system. Connect the ground pin to ground using a large pad or ground plane for better heat dissipation. All of the above assume no ambient airflow. | |

Maximum Power Calculation:

$$P_{D(MAX)} = \frac{T_{J(MAX)} - T_{A(MAX)}}{\theta_{JA}}$$

$T_J(^{\circ}C)$: Maximum recommended junction temperature

$T_A(^{\circ}C)$: Ambient temperature of the application

$\theta_{JA}(^{\circ}C/W)$: Junction-to-Ambient temperature thermal resistance of the package, and other heat dissipating materials.

The maximum power dissipation for a single-output regulator is:

$$P_{D(MAX)} = [(V_{IN(MAX)} - V_{OUT(NOM)}) \times I_{OUT(NOM)} + V_{IN(MAX)} \times I_Q]$$

Where: $V_{OUT(NOM)}$ = the nominal output voltage

$I_{OUT(NOM)}$ = the nominal output current, and

I_Q = the quiescent current the regulator consumes at $I_{OUT(MAX)}$

$V_{IN(MAX)}$ = the maximum input voltage

Then $\theta_{JA} = (+150^{\circ}C - T_A)/P_D$

RECOMMENDED OPERATING CONDITIONS

| Parameter | Symbol | Min | Typ | Max | Unit |
|--------------------------------------|-----------|-----|-----|-----|------|
| Supply Voltage | V_{DD} | 5 | | 50 | V |
| Output Sink Current | I_{OUT} | | | 700 | mA |
| Operating free-air temperature range | T_a | -40 | | +85 | °C |

DC ELECTRICAL CHARACTERISTICS
 $V_{DD}=24V$, $T_a=25^{\circ}C$, No Load, (Unless otherwise noted)

| Parameter | Condition | Min | Typ | Max | Unit |
|--|---|------|------|------|---------|
| SET Bias Voltage | | 1.17 | 1.23 | 1.29 | V |
| SET Current Range | | 200 | | 1400 | μA |
| SET to Output Current Ratio | I_{OUT} / I_{SET} , $I_{SET}=1000\mu A$ | 475 | 500 | 525 | A/A |
| Maximum Output Current | $I_{SET}=1400\mu A$ | | 700 | | mA |
| Output Drop-out Voltage* | $I_{SET}=1000\mu A$, Note 1 | | 0.35 | | V |
| Thermal Shut-down Junction Temperature | Hysteresis $20^{\circ}C$ | | 160 | | °C |
| “Low” Input Voltage | | | | 0.8 | V |
| “High” Input Voltage | | 2 | | | V |
| “Low” Input Current | | -20 | | +20 | μA |
| “High” Input Current | | -5.0 | | +5.0 | μA |
| Output Enable Delay Time | OE from Low to High, $V_{OUT}=0.5V$, $I_{OUT}=350mA$, 50% | | 3 | | μS |
| Output Disable Delay Time | OE from High to Low, $V_{OUT}=0.5V$, $I_{OUT}=350mA$, 50% | | 3 | | μS |
| Supply Current Consumption | | | | 5 | mA |

Note1: Output dropout voltage: $90\% \times I_{OUT}$ @ $V_{OUT}=500mV$

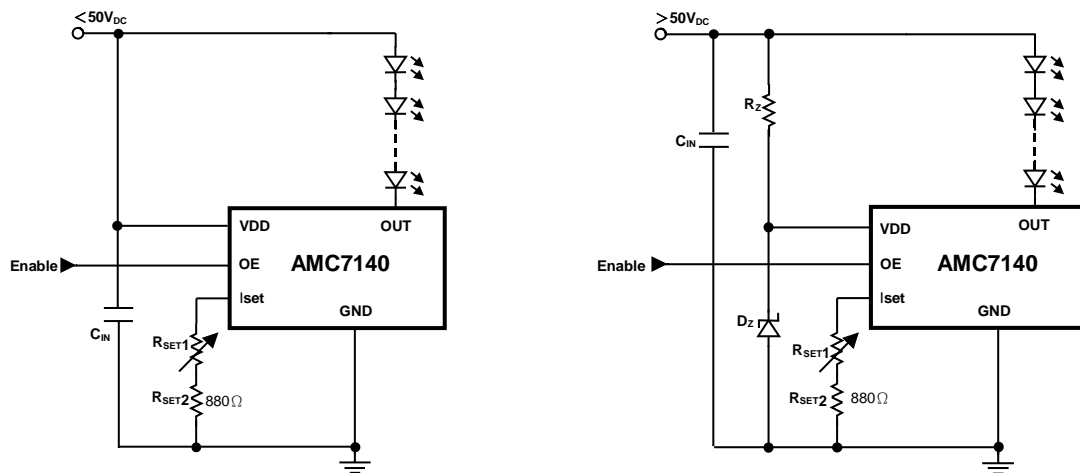
APPLICATION INFORMATION

AMC7140 is a high voltage, low dropout current regulator for maximum output current up to 700mA with OE pin. The current could be linearly adjusted through variable resistor connected to I_{SET} pin, or by PWM control via OE pin. Although the absolute maximum rating of OUT pin 60V, the dropout voltage between OUT pin and GND pin should not be too large when current is sinking because of the heat dissipation capability of the package.

Here are some of the typical application examples:

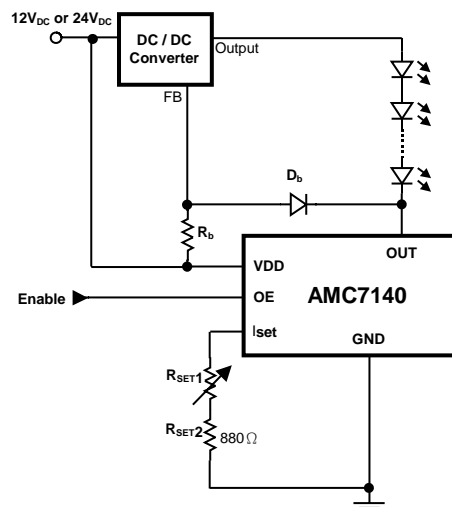
DC Voltage Input:

Any DC voltage level between 5V to 50V could be adopted as power source V_{DD} for typical application of AMC7140 as long as V_{DD} is larger than the total forward voltage drop of the LED string (at expecting current) by 0.35V. If 50V ~ 60V voltage level is adopted as power source to positive end of the LED string, one Zener shunt regulator could be used to provide appropriate voltage to VDD pin.



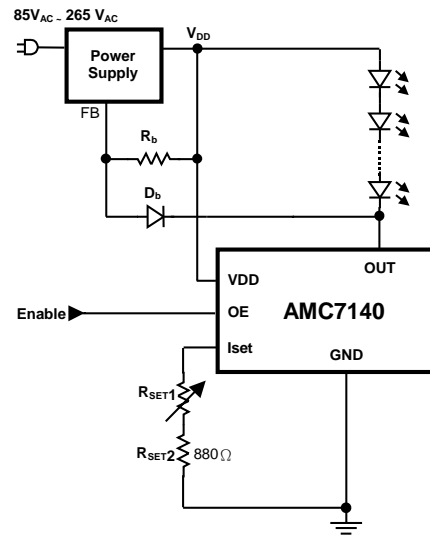
LED Backlight Solution:

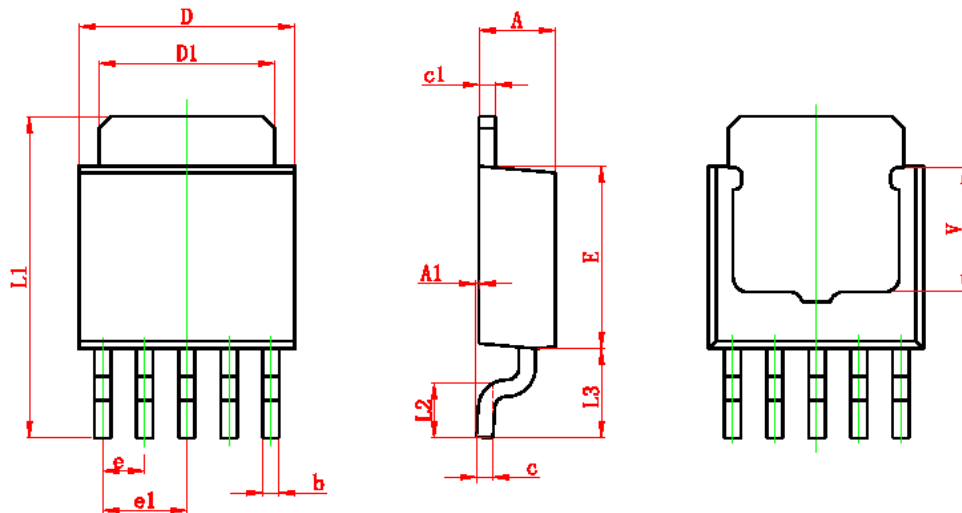
AMC7140 could coordinate with any type of DC-to-DC converter through feedback path to realized LED backlight module. The number of LEDs in the string is variable even with certain fixed power source since the output voltage of the DC-to-DC converter could be modulated according to feedback signal.



AC Voltage Input:

AMC7140 could work with any kind of well-known or well-developed switch-mode power supply system. Simply cut off the internal feedback path of the power supply system and then feed the signal from AMC7140 back to the power supply system instead.



PACKAGE
TO-252-5L


| Symbol | Dimensions in Millimeters | | Dimensions in Inches | |
|--------|---------------------------|-------|----------------------|-------|
| | MIN | MAX | MIN | MAX |
| A | 2.200 | 2.400 | 0.087 | 0.094 |
| A1 | 0.000 | 0.127 | 0.000 | 0.005 |
| B | 0.400 | 0.600 | 0.016 | 0.024 |
| C | 0.430 | 0.580 | 0.017 | 0.023 |
| c1 | 0.430 | 0.580 | 0.017 | 0.023 |
| D | 6.350 | 6.650 | 0.250 | 0.262 |
| D1 | 5.200 | 5.400 | 0.205 | 0.213 |
| E | 5.400 | 5.700 | 0.213 | 0.224 |
| E | 1.270 TYP | | 0.050 TYP | |
| e1 | 2.540 TYP | | 1.000 TYP | |
| L1 | 9.500 | 9.900 | 0.374 | 0.390 |
| L2 | 1.400 | 1.780 | 0.055 | 0.070 |
| L3 | 2.550 | 2.900 | 0.100 | 0.114 |
| V | 3.800 REF | | 0.150 REF | |