



HJQ-22F

SPECIFICATION

FILE NUMBER: P-08KD401A

DATE: 2001/11/02



■ Features

- 4 pole configurations
- Au-clad contact available

■ CONTACT DATA

Contact Form	4C/2C	
Contact Material	AgCdO	
Contact Ratings	5A 240VAC/30VDC	
Max Switching Voltage	250VAC/30VDC	
Max Switching Current	5A	
Max Switching Power	1750VA/210W	
Contact Resistance	100m Ω Max	at 6VDC 1A
Life Expectancy Electrical	100,000	Operations(at30Operations/minute)
Machanical	10,000,000	Operations

■ GENERAL DATA

Insulation Resistance	100MΩ Min at 500VDC	
Dielectric Strength Between Open Contacts	1000VAC(for one minute)	
Between Contacts and coil	1500VAC(for one minute)	
Operate Time	25ms	
Release Time	25ms	
Temperature Range	-40°C to+70 °C	
Shock Resistance	Operating Extremes	20G
	Damage Limits	100G
Vibration Resistance	10-55Hz,1.5mm	
Humidity	40-85%	
Weight	Approx 35g	
Safety Standard	CSA:203664 UL:E209198	

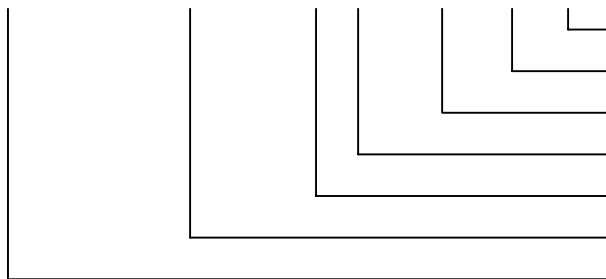


■ COIL DATA(4Z)

Nominal Voltage		Coil Resistance at 20±10%(Ω)		Max Operate Voltage		Min Release Voltage		Max Applicable Voltage	
5-110VDC	6-240VAC	VDC	VAC	VDC	VAC	VDC	VAC	VDC	VAC
		0.9W	1.2VA						
5	6	27.5	11.5	3.75	4.8	0.5	0.6	6.5	7.8
6	12	40	46	4.5	9.6	0.6	1.2	7.8	15.6
12	24	160	184	9	19.2	1.2	2.4	15.6	31.2
24	48	650	735	18	38.4	2.4	4.8	31.2	62.4
48	110	2600	4550±15%	36	88	4.8	11	62.4	143
110	120	11000	4550±15%	82.5	96	11	12	143	156
	220/240		14400±15%		176		24		286/312

■ ORDERING CODE

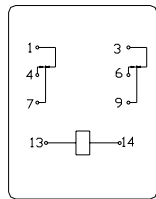
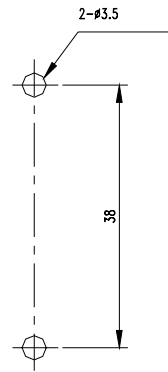
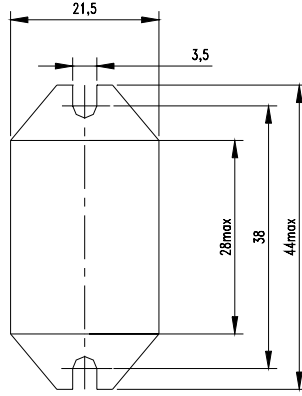
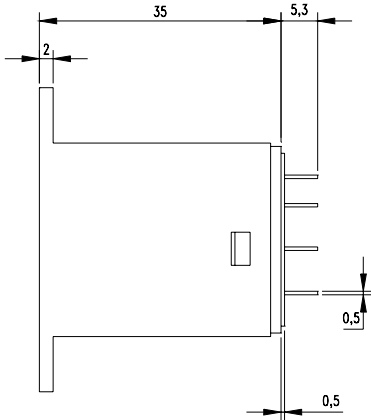
HJQ-22F-12VDC-4Z(P)---1---F--D



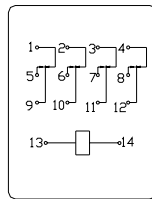
- With LED
- With Flange for 38mm pitch hole
- Bifurcated moving spring
- P: PCB Type Nil: B Type
- 2Z Form 2C 4Z Form 4C
- Coil Nominal Voltage
- Relay Model

OVERALL AND MOUNTING DIMENSIONS

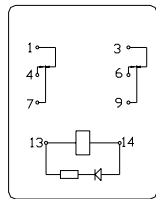
MOUNTING COVER



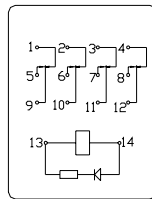
2C Terminal Arrangement/
Internal Connections
(Bottom view)



4C Terminal Arrangement/
Internal Connections
(Bottom view)

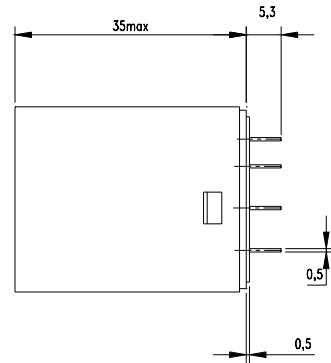
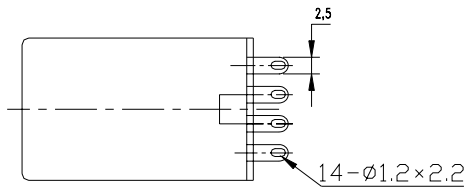


2CD

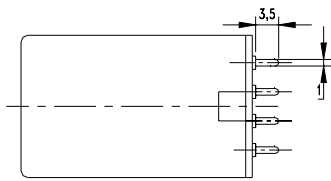


4CD

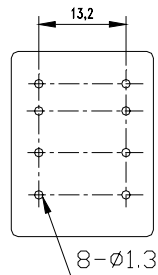
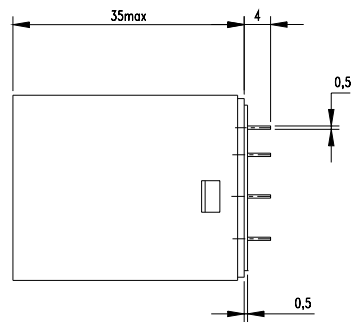
B Type Terminals



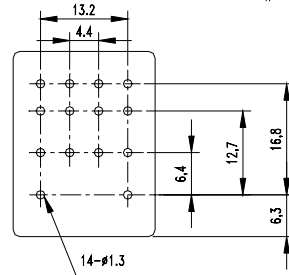
P Type Terminals



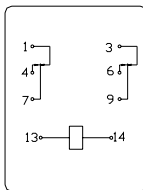
P Type PCB Mounting



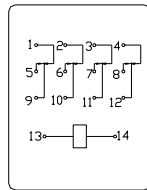
2C



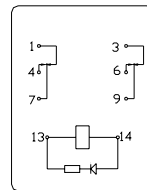
4C



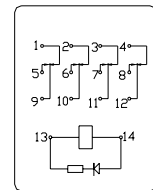
2C Terminal Arrangement/
Internal Connections
(Bottom view)



4C Terminal Arrangement/
Internal Connections
(Bottom view)



2CD



4CD